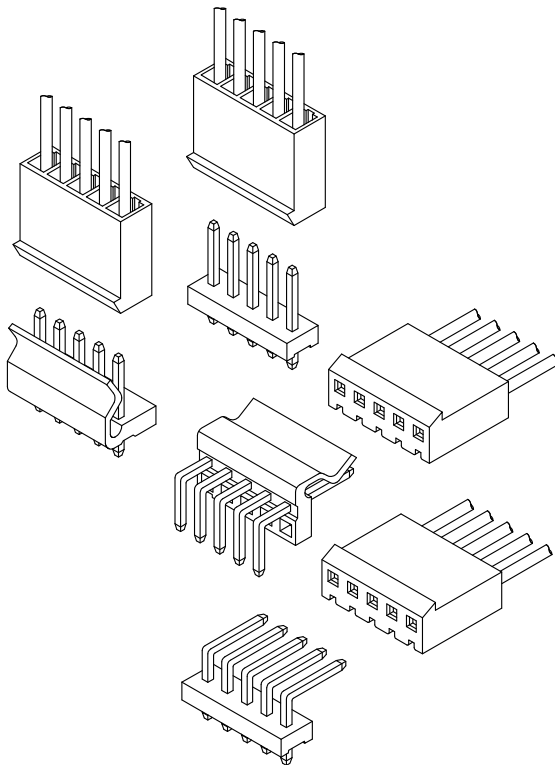


A3960 MX 3.96 CONNECTOR

3.96mm Pitch/Disconnectable Crimp style connectors



- Secure locking structure
- Low insertion force
- Suction area for picking up
- Improvement of engagement with prying

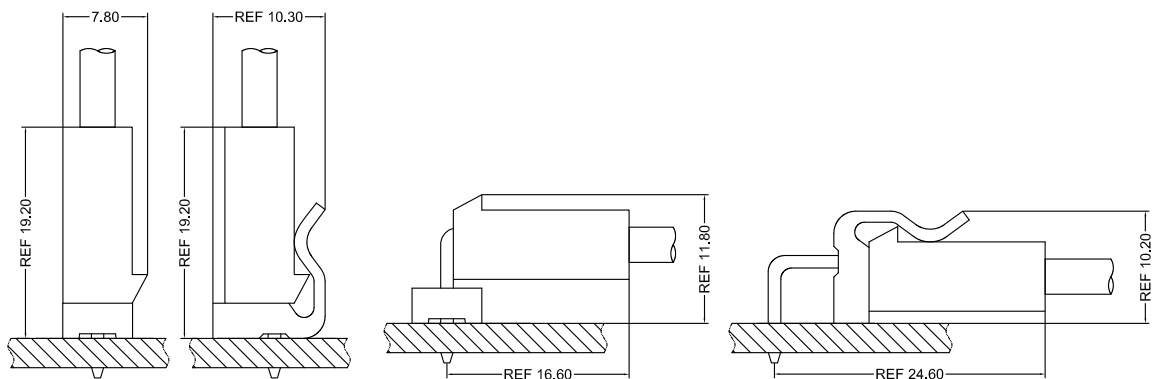
Specifications:

- Current rating: 7.0 A / AC,DC (AWG #18)
- Voltage rating: 250 V AC/DC
- Temperature range: -40°C ~ +105°C
(including temperature rise in applying electrical current)
- Contact resistance: Initial value/ 20m Ω max
Insulation resistance: 1000 MΩ min
Withstanding voltage: 1500 VAC/minute
Applicable wire: Conductor size/ AWG#24~#18
Insulation O.D./ 1.30 to 2.80 mm

- * Compliant with RoHS2/ REACH
- * Refer to "General Instruction and Notice when using Terminals and Connectors"
- * Contact CSG for details

Material:

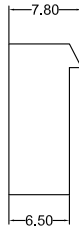
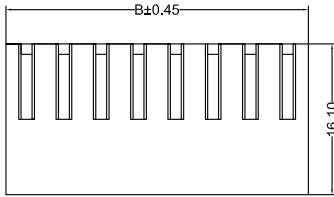
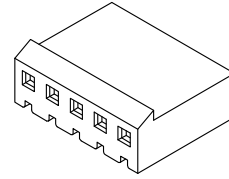
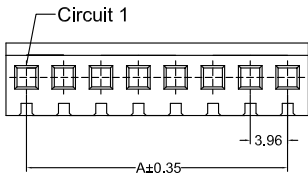
Housing: PA66/UL94-V0/ V2;Color:White/ Black
Terminal: Phosphor/Bass Tin-plated/ Gold-Plated
DIP Wafer Housing: PA66,UL94-V0;Color:White
DIP Wafer Pin: Bass Tin-plated/ Gold-Plated



- Note: 1. The above figure is the figure viewed from the connector mounting side.
2. Tolerances are non-cumulative: ± 0.08 mm for all centers.
3. The dimensions above should serve as a guideline. Contact CSG for details.

CSG

A3960 MX 3.96



A3960HF 0XX AT P6 X XXX

PIN
005=5PINS

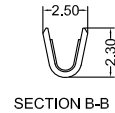
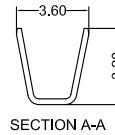
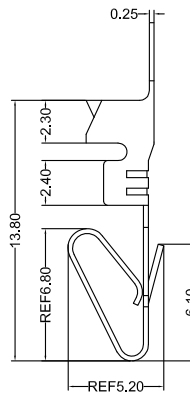
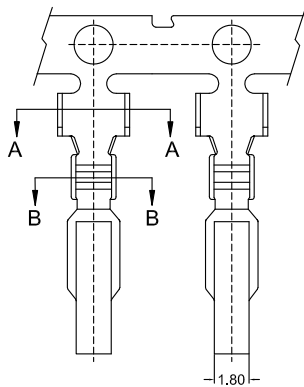
SPECIAL
AT=Have BOSS

Material
P6=PA66 94V-0

Code
209

Color
9=White
0=Black

CSG PART NO.	Dimension mm		Qty/BAG
	A	B	
A3960HF002ATP6XXXX	3.96	8.80	1000PCS
A3960HF003ATP6XXXX	7.92	12.76	1000PCS
A3960HF004ATP6XXXX	11.88	16.72	1000PCS
A3960HF005ATP6XXXX	15.84	20.68	1000PCS
A3960HF006ATP6XXXX	19.80	24.64	1000PCS
A3960HF007ATP6XXXX	23.76	28.60	1000PCS
A3960HF008ATP6XXXX	27.72	32.56	1000PCS
A3960HF009ATP6XXXX	31.68	36.52	1000PCS
A3960HF010ATP6XXXX	35.64	40.48	1000PCS
A3960HF011ATP6XXXX	39.60	44.44	1000PCS
A3960HF012ATP6XXXX	43.56	48.40	1000PCS
A3960HF013ATP6XXXX	47.52	52.36	1000PCS
A3960HF014ATP6XXXX	51.48	56.32	1000PCS
A3960HF015ATP6XXXX	55.44	60.28	1000PCS



A3960 M 0 A XX 209

Type
M=Female Terminal

SPECIAL
O=NO Special

Material
A=Phosphor

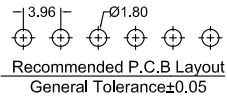
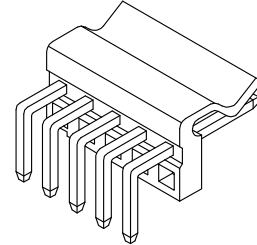
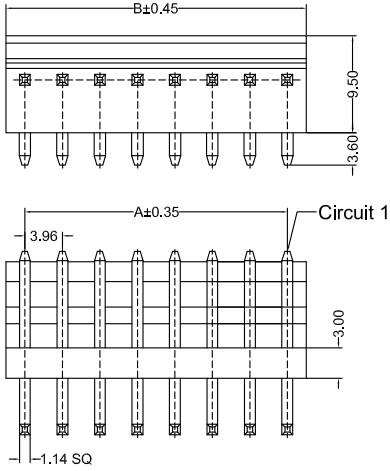
Finish
TP=Tin-Plated
GF=Gold-Plated G/F

Code
209

CSG PART NO.	Wire Range	Insulation O.D.	Q'ty/Reel
A3960M0ATP209	AWG#18-#24	2.80mm(max)	5000PCS
A3960M0AGF209	AWG#18-#24	2.80mm(max)	5000PCS



A3960 MX 3.96



A3960RD.0XX KB P6 XX C X 209

PIN
002=2PINS

SPECIAL
KB=Have Back

Material
P6=PA66 94V-0

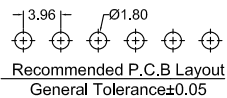
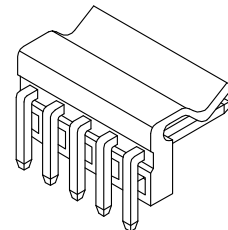
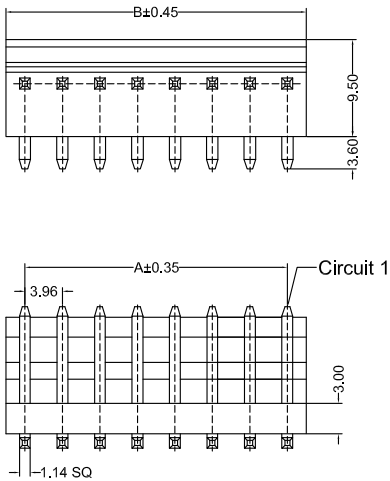
Finish
GF=Terminal Gold-Plated
TP=Terminal Tin-Plated

Code
209

Color
9=White
0=Black

Packing
C=Bag

CSG PART NO.	Dimension mm		Q'ty/BAG
	A	B	
A3960RD002KBP6XXCX209	3.96	7.92	1000PCS
A3960RD003KBP6XXCX209	7.92	11.88	1000PCS
A3960RD004KBP6XXCX209	11.88	15.84	1000PCS
A3960RD005KBP6XXCX209	15.84	19.80	1000PCS
A3960RD006KBP6XXCX209	19.80	23.76	1000PCS
A3960RD007KBP6XXCX209	23.76	27.72	1000PCS
A3960RD008KBP6XXCX209	27.72	31.68	1000PCS
A3960RD009KBP6XXCX209	31.68	35.64	1000PCS
A3960RD010KBP6XXCX209	35.64	39.60	1000PCS
A3960RD011KBP6XXCX209	39.60	43.56	1000PCS
A3960RD012KBP6XXCX209	43.56	47.52	1000PCS
A3960RD013KBP6XXCX209	47.52	51.48	1000PCS
A3960RD014KBP6XXCX209	51.48	55.44	1000PCS
A3960RD015KBP6XXCX209	55.44	59.40	1000PCS



A3960RD.0XX KB P6 XX C X 001

PIN
002=2PINS

SPECIAL
KB=Have Back

Material
P6=PA66 94V-0

Finish
GF=Terminal Gold-Plated
TP=Terminal Tin-Plated

Code
001

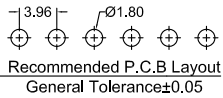
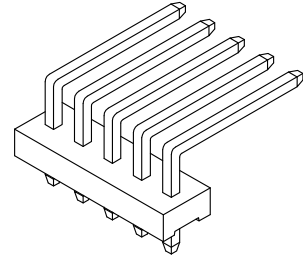
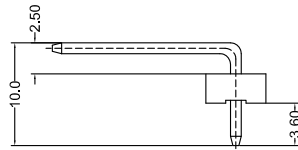
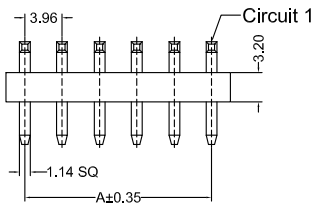
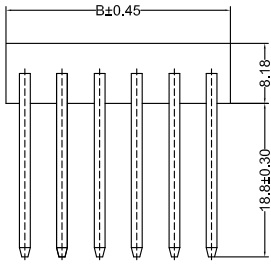
Color
9=White
0=Black

Packing
C=Bag

CSG PART NO.	Dimension mm		Q'ty/BAG
	A	B	
A3960RD002KBP6XXCX001	3.96	7.92	1000PCS
A3960RD003KBP6XXCX001	7.92	11.88	1000PCS
A3960RD004KBP6XXCX001	11.88	15.84	1000PCS
A3960RD005KBP6XXCX001	15.84	19.80	1000PCS
A3960RD006KBP6XXCX001	19.80	23.76	1000PCS
A3960RD007KBP6XXCX001	23.76	27.72	1000PCS
A3960RD008KBP6XXCX001	27.72	31.68	1000PCS
A3960RD009KBP6XXCX001	31.68	35.64	1000PCS
A3960RD010KBP6XXCX001	35.64	39.60	1000PCS
A3960RD011KBP6XXCX001	39.60	43.56	1000PCS
A3960RD012KBP6XXCX001	43.56	47.52	1000PCS
A3960RD013KBP6XXCX001	47.52	51.48	1000PCS
A3960RD014KBP6XXCX001	51.48	55.44	1000PCS
A3960RD015KBP6XXCX001	55.44	59.40	1000PCS



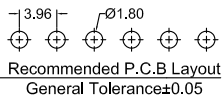
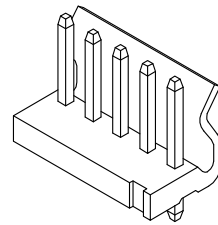
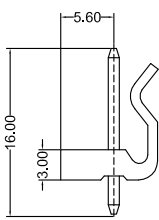
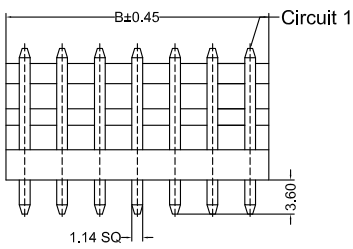
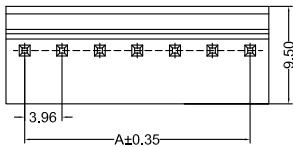
A3960 MX 3.96



A3960RD.0XX AA P6 XX C X 016

- PIN 002=2PINS
- SPECIAL AA=NO Special
- Material P6=PA66 94V-0
- Finish GF=Terminal Gold-Plated TP=Terminal Tin-Plated
- Code 016
- Color 9=White 0=Black
- Packing C=Bag

CSG PART NO.	Dimension mm		Q'ty/BAG
	A	B	
A3960RD002AAP6XXCX016	3.96	7.92	1000PCS
A3960RD003AAP6XXCX016	7.92	11.88	1000PCS
A3960RD004AAP6XXCX016	11.88	15.84	1000PCS
A3960RD005AAP6XXCX016	15.84	19.80	1000PCS
A3960RD006AAP6XXCX016	19.80	23.76	1000PCS
A3960RD007AAP6XXCX016	23.76	27.72	1000PCS
A3960RD008AAP6XXCX016	27.72	31.68	1000PCS
A3960RD009AAP6XXCX016	31.68	35.64	1000PCS
A3960RD010AAP6XXCX016	35.64	39.60	1000PCS
A3960RD011AAP6XXCX016	39.60	43.56	1000PCS
A3960RD012AAP6XXCX016	43.56	47.52	1000PCS
A3960RD013AAP6XXCX016	47.52	51.48	1000PCS
A3960RD014AAP6XXCX016	51.48	55.44	1000PCS
A3960RD015AAP6XXCX016	55.44	59.40	1000PCS



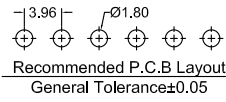
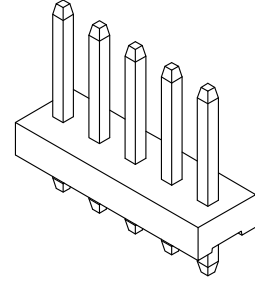
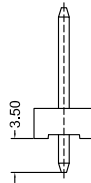
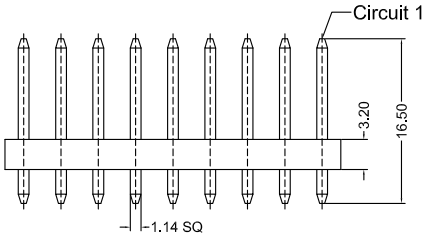
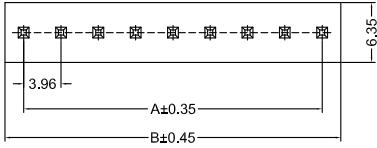
A3960VD.0XX KB P6 XX C X 209

- PIN 002=2PINS
- SPECIAL KB=Have Back
- Material P6=PA66 94V-0
- Finish GF=Terminal Gold-Plated TP=Terminal Tin-Plated
- Code 209
- Color 9=White 0=Black
- Packing C=Bag

CSG PART NO.	Dimension mm		Q'ty/BAG
	A	B	
A3960VD002KBP6XXCX209	3.96	7.92	1000PCS
A3960VD003KBP6XXCX209	7.92	11.88	1000PCS
A3960VD004KBP6XXCX209	11.88	15.84	1000PCS
A3960VD005KBP6XXCX209	15.84	19.80	1000PCS
A3960VD006KBP6XXCX209	19.80	23.76	1000PCS
A3960VD007KBP6XXCX209	23.76	27.72	1000PCS
A3960VD008KBP6XXCX209	27.72	31.68	1000PCS
A3960VD009KBP6XXCX209	31.68	35.64	1000PCS
A3960VD010KBP6XXCX209	35.64	39.60	1000PCS
A3960VD011KBP6XXCX209	39.60	43.56	1000PCS
A3960VD012KBP6XXCX209	43.56	47.52	1000PCS
A3960VD013KBP6XXCX209	47.52	51.48	1000PCS
A3960VD014KBP6XXCX209	51.48	55.44	1000PCS
A3960VD015KBP6XXCX209	55.44	59.40	1000PCS



A3960 MX 3.96



A3960VD 0XX AA P6 CX 209

- PIN
- 002=2PINS
- SPECIAL
- AA=NO Special
- Material
- P6=PA66 94V-0
- Finish
- GF=Terminal Gold-Plated
- TP=Terminal Tin-Plated
- Code 209
- Color
- 9=White
- 0=Black
- Packing
- C=Bag

CSG PART NO.	Dimension mm		Qty/BAG
	A	B	
A3960VD002AAP6XXCX209	3.96	7.92	1000PCS
A3960VD003AAP6XXCX209	7.92	11.88	1000PCS
A3960VD004AAP6XXCX209	11.88	15.84	1000PCS
A3960VD005AAP6XXCX209	15.84	19.80	1000PCS
A3960VD006AAP6XXCX209	19.80	23.76	1000PCS
A3960VD007AAP6XXCX209	23.76	27.72	1000PCS
A3960VD008AAP6XXCX209	27.72	31.68	1000PCS
A3960VD009AAP6XXCX209	31.68	35.64	1000PCS
A3960VD010AAP6XXCX209	35.64	39.60	1000PCS
A3960VD011AAP6XXCX209	39.60	43.56	1000PCS
A3960VD012AAP6XXCX209	43.56	47.52	1000PCS
A3960VD013AAP6XXCX209	47.52	51.48	1000PCS
A3960VD014AAP6XXCX209	51.48	55.44	1000PCS
A3960VD015AAP6XXCX209	55.44	59.40	1000PCS