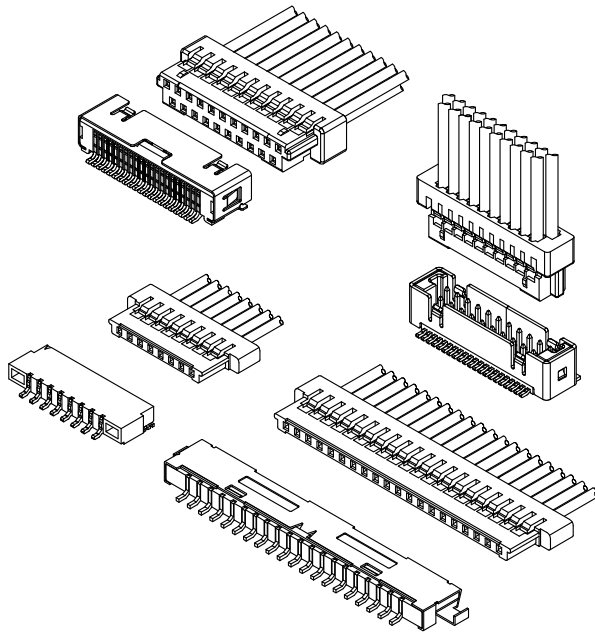


# A1255 FIS CONNECTOR

1.25mm Pitch/Disconnectable Crimp style connectors



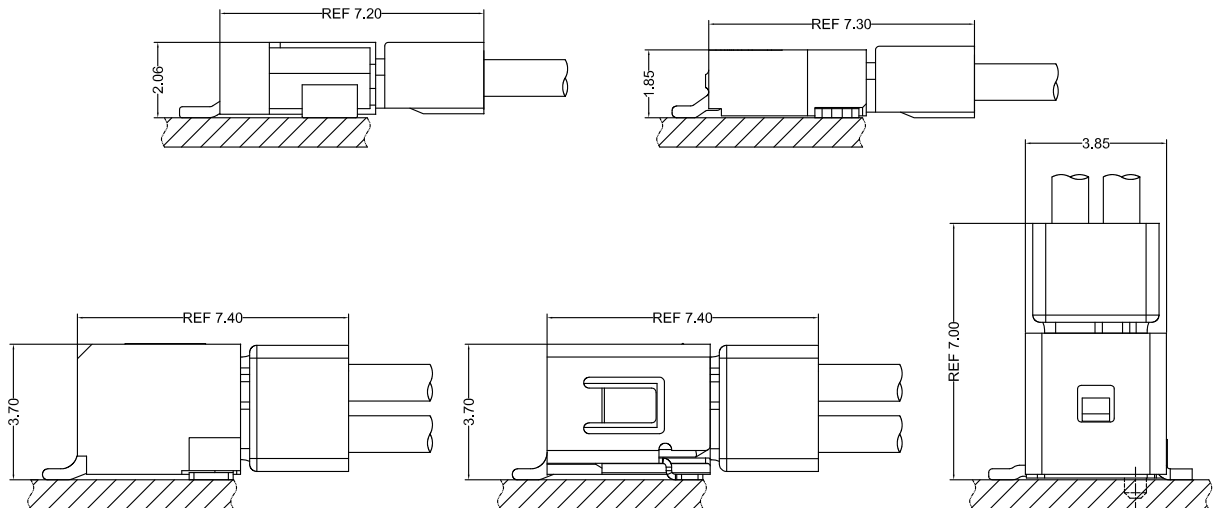
 E529482

## Specifications:

- Current rating: 1.0 A / AC,DC
- Voltage rating: 200 V AC/DC
- Temperature range: -40°C ~ +85°C  
(including temperature rise in applying electrical current)
- Contact resistance: Initial value/ 40m Ω max  
Insulation resistance: 100 M Ω min  
Withstanding voltage: 500 VAC/minute  
Applicable wire: Conductor size/ AWG#32~#28  
Insulation O.D./ 0.38 to 1.00 mm
- \* Compliant with RoHS2/ REACH/ HF
- \* Refer to "General Instruction and Notice when using Terminals and Connectors"
- \* Contact CSG for details

## Material:

Housing: PA66/UL94-V0;Color:Black  
Terminal: Phosphor/ Tin-plated,Gold-Plated  
SMT Wafer Housing: LCP/ PA6T,UL94-V0;  
Color:A=Natural/ Beige  
SMT Wafer Pin: Phosphor/ Tin-plated,Gold-Plated  
Wafer Fixed Foot: Bass/ Tin-plated

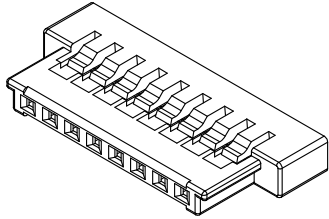
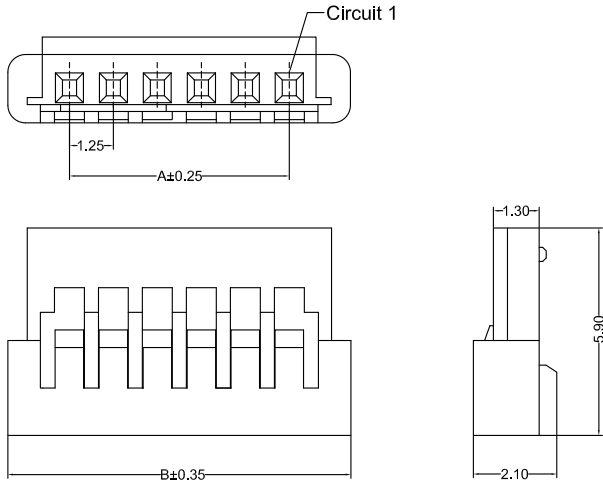


- Note: 1. The above figure is the figure viewed from the connector mounting side.  
2. Tolerances are non-cumulative:  $\pm 0.08$  mm for all centers.  
3. The dimensions above should serve as a guideline. Contact CSG for details.

**CSG**

Tel:+86-769-85312070 85375507 E-mail:James@csg-china.com www.csg-china.com www.jst-connector.cn

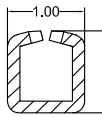
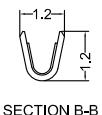
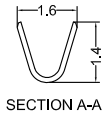
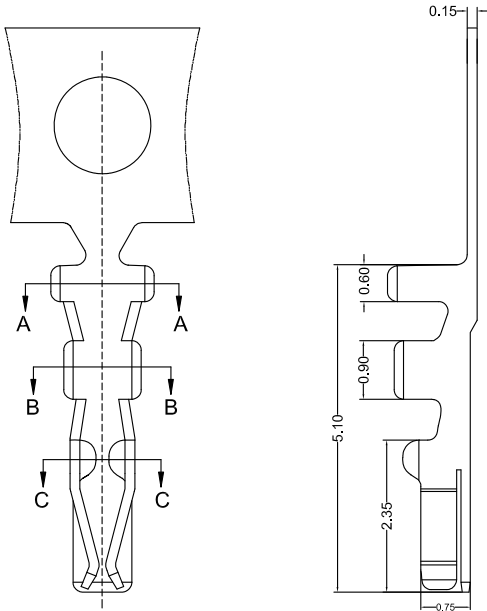
# A1255 FIS



A1255HF 0XX AA P6 0 XXX

- PIN
- 005=5PINS
- SPECIAL
- AA=NO Special
- Material
- P6=PA66 94V-0
- Code
- 005 One convex
- 00A Two convex
- Color
- 0=Black

CSG PART NO.	Dimension mm		Q'ty/BAG
	A	B	
A1255HF002AAP60XXX	1.25	6.00	1000PCS
A1255HF003AAP60XXX	2.50	7.25	1000PCS
A1255HF004AAP60XXX	3.75	8.50	1000PCS
A1255HF005AAP60XXX	5.00	9.75	1000PCS
A1255HF006AAP60XXX	6.25	11.00	1000PCS
A1255HF007AAP60XXX	7.50	12.25	1000PCS
A1255HF008AAP60XXX	8.75	13.50	1000PCS
A1255HF009AAP60XXX	10.00	14.75	1000PCS
A1255HF010AAP60XXX	11.25	16.00	1000PCS
A1255HF011AAP60XXX	12.50	17.25	1000PCS
A1255HF012AAP60XXX	13.75	18.50	1000PCS



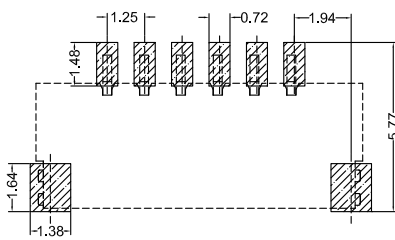
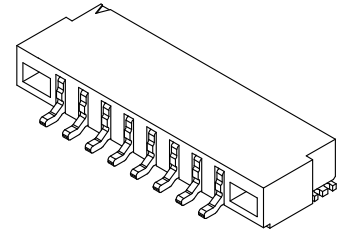
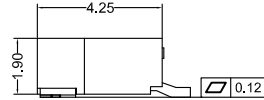
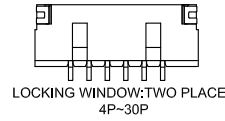
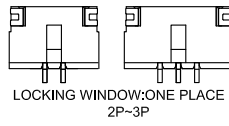
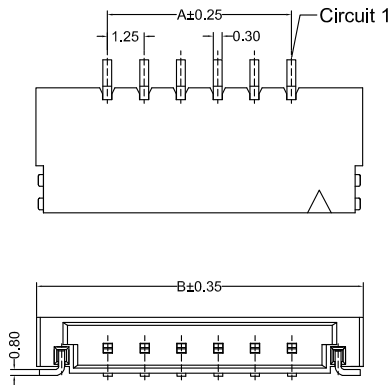
A1255 M 0 A XX 006

- Type
- M=Female Terminal
- Material
- A=Phosphor
- Finish
- TP=Tin-Plated
- GF=Gold-Plated G/F
- Code
- 006

CSG PART NO.	Wire Range	Insulation O.D.	Q'ty/Reel
A1255M0ATP006	AWG#28-#32	0.90mm(max)	15000PCS
A1255M0AGF006	AWG#28-#32	0.90mm(max)	15000PCS



# A1255 FIS

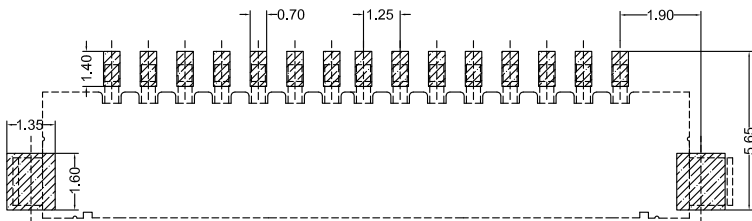
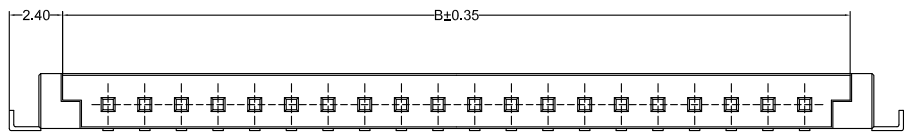
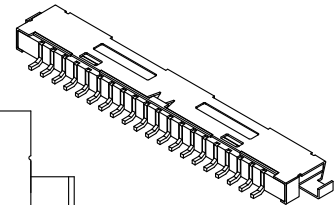
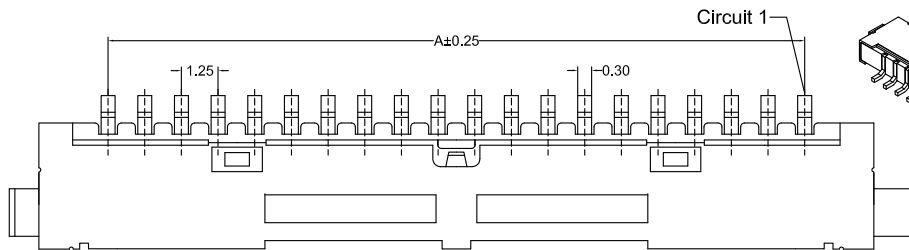


Recommended P.C.B Layout  
General Tolerance±0.05

A1255RS\_0XX AA LP TP B A 188

- PIN
- 005=5PINS
- SPECIAL
- AA=Normal
- Material
- LP=LCP 94V-0
- Finish
- TP=Terminal Tin-Plated
- Code
- 188
- Color
- A=Natural
- Packing
- B=Tape & Reel

CSG PART NO.	Dimension mm		Q'ty/Reel
	A	B	
A1255RS002AALPTPBA188	1.25	6.10	1000PCS
A1255RS003AALPTPBA188	2.50	7.35	1000PCS
A1255RS004AALPTPBA188	3.75	8.60	1000PCS
A1255RS005AALPTPBA188	5.00	9.85	1000PCS
A1255RS006AALPTPBA188	6.25	11.10	1000PCS
A1255RS007AALPTPBA188	7.50	12.35	1000PCS
A1255RS008AALPTPBA188	8.75	13.60	1000PCS
A1255RS009AALPTPBA188	10.00	14.85	1000PCS
A1255RS010AALPTPBA188	11.25	16.10	1000PCS
A1255RS011AALPTPBA188	12.50	17.35	1000PCS
A1255RS012AALPTPBA188	13.75	18.60	1000PCS
A1255RS013AALPTPBA188	15.00	19.85	1000PCS
A1255RS014AALPTPBA188	16.25	21.10	1000PCS
A1255RS015AALPTPBA188	17.50	22.35	1000PCS
A1255RS020AALPTPBA188	23.50	28.60	1000PCS
A1255RS025AALPTPBA188	30.00	34.85	1000PCS
A1255RS030AALPTPBA188	36.25	41.10	1000PCS



Recommended P.C.B Layout  
General Tolerance±0.05

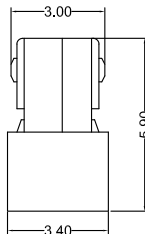
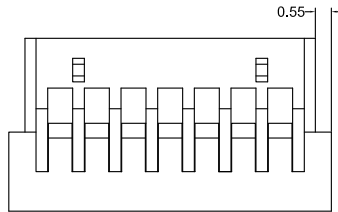
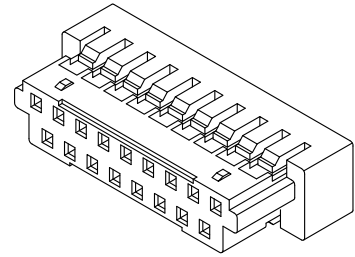
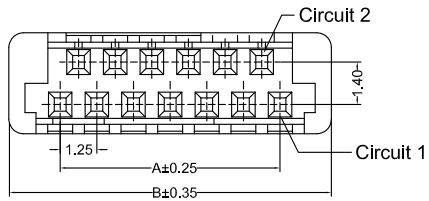
A1255RS\_0XX AG LP TP B A 188

- PIN
- 005=5PINS
- SPECIAL
- AG=With Cover
- Material
- LP=LCP 94V-0
- Finish
- TP=Terminal Tin-Plated
- Code
- 188
- Color
- A=Natural
- Packing
- B=Tape & Reel

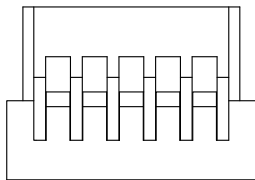
CSG PART NO.	Dimension mm		Q'ty/Reel
	A	B	
A1255RS020AGLPTPBA188	23.75	26.60	1000PCS
A1255RS030AGLPTPBA188	36.25	39.10	1000PCS



# A1255 FIS



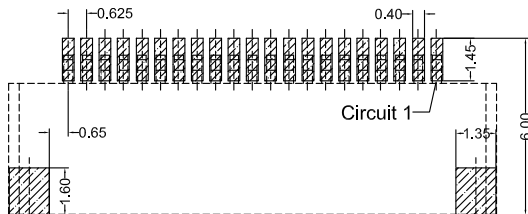
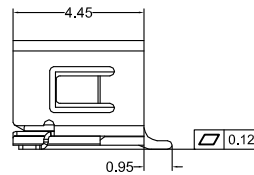
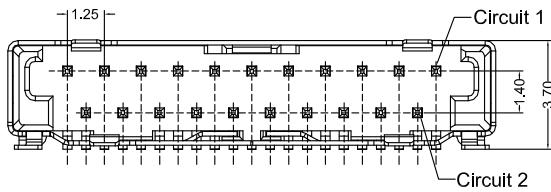
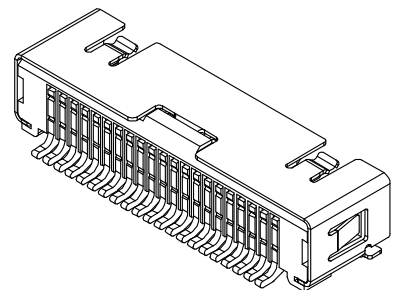
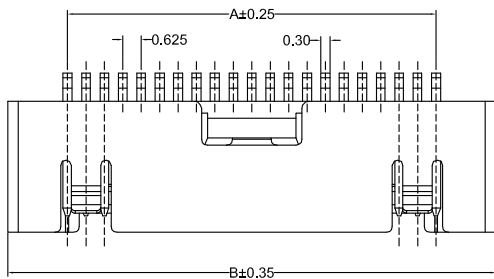
14P,17P,19P,21P,31,41P



5P,7P,9P,11P

A1255HF 0XX AA P6 0 188  
 PIN 005=5PINS  
 SPECIAL AA=NO Special  
 Material P6=PA66 94V-0  
 Code 188  
 Color 0=Black

CSG PART NO.	Dimension mm		Q'ty/BAG
	A	B	
A1255HF005AAP60188	2.50	6.00	1000PCS
A1255HF007AAP60188	3.75	7.25	1000PCS
A1255HF009AAP60188	5.00	8.50	1000PCS
A1255HF011AAP60188	6.25	9.75	1000PCS
A1255HF013AAP60188	7.50	11.00	1000PCS
A1255HF015AAP60188	8.75	12.25	1000PCS
A1255HF017AAP60188	10.00	13.50	1000PCS
A1255HF019AAP60188	11.25	14.75	1000PCS
A1255HF021AAP60188	12.50	16.00	1000PCS
A1255HF031AAP60188	18.75	22.25	1000PCS
A1255HF041AAP60188	25.00	28.50	1000PCS



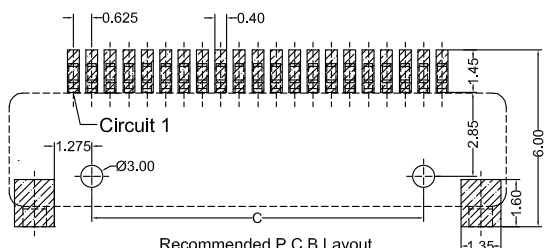
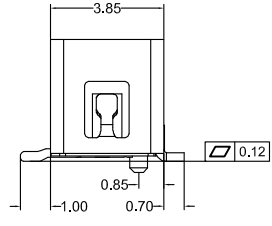
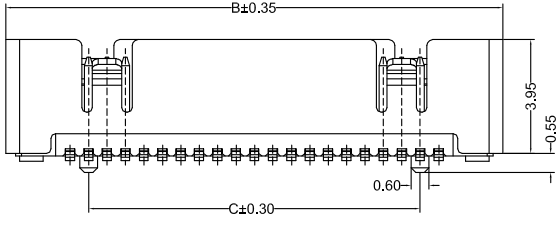
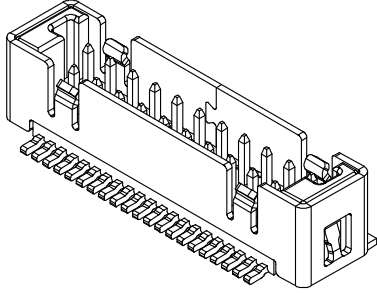
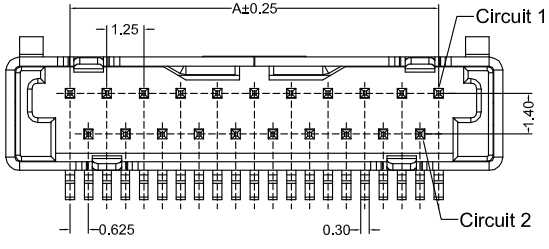
A1255RS 0XX AA 6T GF BA 188  
 PIN 021=21PINS  
 SPECIAL AA=Normal  
 Material 6T=PA6T 94V-0  
 Finish GF=Terminal Gold-Plated  
 Code 188  
 Color A=Natural  
 Packing B=Tape & Reel

Recommended P.C.B Layout  
 General Tolerance±0.05

CSG PART NO.	Dimension mm		Q'ty/Reel
	A	B	
A1255RS021AA6TGFBA188	12.50	16.55	1000PCS
A1255RS031AA6TGFBA188	18.75	22.80	1000PCS
A1255RS041AA6TGFBA188	25.00	29.05	1000PCS



# A1255 FIS



Recommended P.C.B Layout  
General Tolerance±0.05

A1255VS\_0XX AP 6T GF BA 188

PIN  
021=21PINS  
SPECIAL  
AP=Pillars  
Material  
6T=PA6T 94V-0  
Finish  
GF=Terminal Gold-Plated

Code  
188  
Color  
A=Natural  
Packing  
B=Tape & Reel

CSG PART NO.	Dimension mm		Q'ty/Reel
	A	B	
A1255VS021AP6TGFB A188	12.50	16.85	1000PCS
A1255VS031AP6TGFB A188	18.75	23.10	1000PCS

