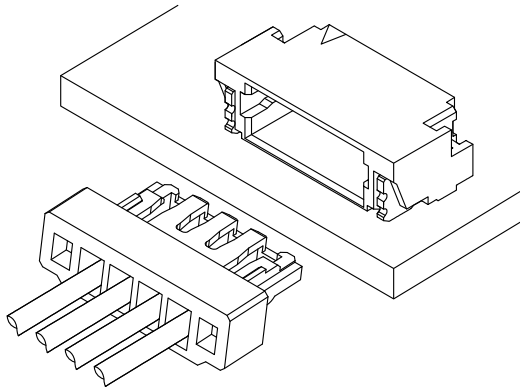


A0802 DF52 CONNECTOR

0.80mm Pitch/Disconnectable Crimp style connectors



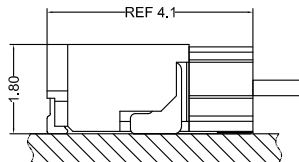
 E529482

Specifications:

- Current rating: 1.0 A AC,DC (AWG #28)
 - Voltage rating: 30 V AC/DC
 - Temperature range: -40°C ~ +105°C
(including temperature rise in applying electrical current)
 - Contact resistance: Initial value/ 30m Ω max
After environmental testing/ 50m Ω max
 - Insulation resistance: 100 M Ω min
 - Withstanding voltage: 200 VAC/minute
 - Applicable wire: Conductor size/ AWG#32 to #28
Insulation O.D./ 0.6 mm
- * Compliant with RoHS2/ REACH
* Refer to "General Instruction and Notice when using Terminals and Connectors" at the end of this catalog.
* Contact CSG for details

Material:

Housing: PA4T,UL94-V0;Color:Black
Terminal: Phosphor/ Tin-plated, Gold-Plated
Wafer Housing: LCP,UL94-V0;Color:Black
Wafer Pin: Phosphor/ Tin-plated
Wafer Fixed Foot: Brass/ Tin-plated

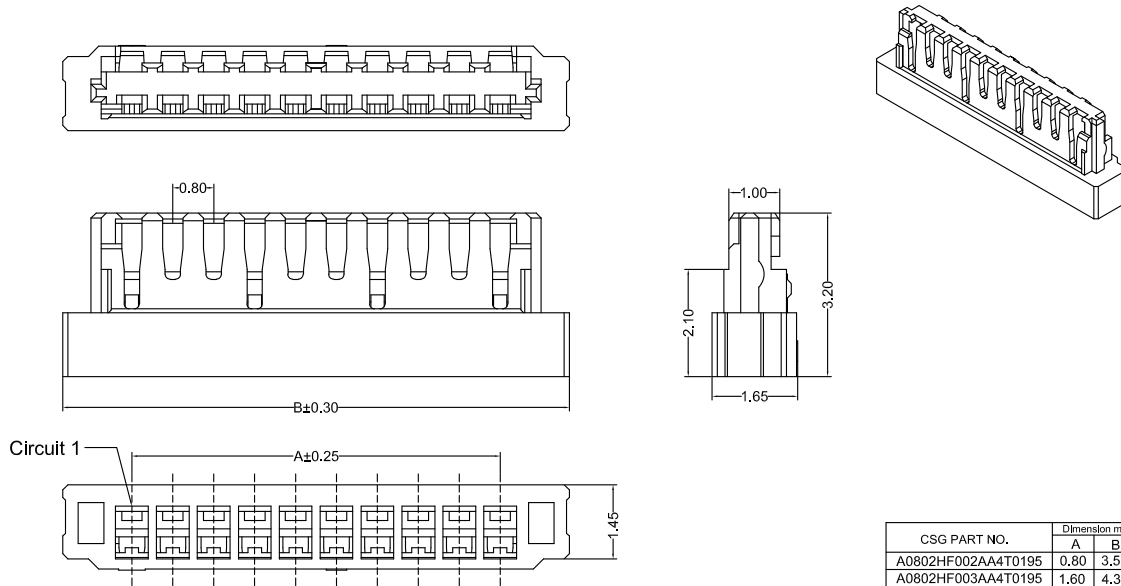


- Note: 1. The above figure is the figure viewed from the connector mounting side.
2. Tolerances are non-cumulative: ± 0.08 mm for all centers.
3. The dimensions above should serve as a guideline. Contact CSG for details.

CSG

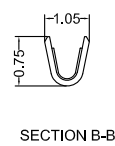
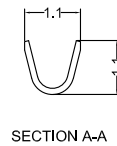
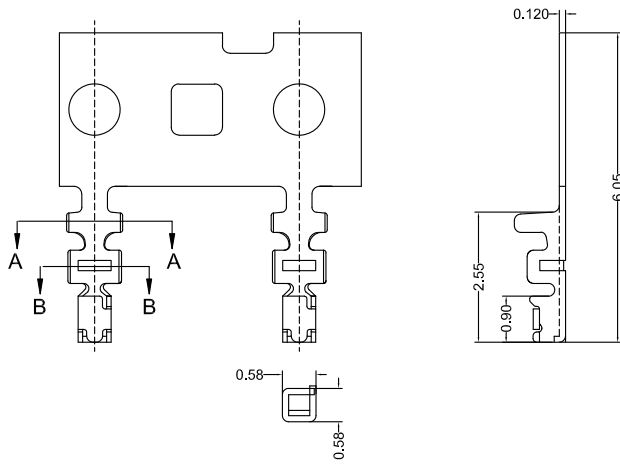
Tel:+86-769-85312070 85375507 E-mail:James@csg-china.com www.csg-china.com www.jst-connector.cn

A0802 DF52



A0802HF 0XX AA 4T 0 195
 PIN
 002=2PINS
 SPECIAL
 AA=NO Special
 Material
 4T=PA4T 94V-0
 Code
 195
 Color
 0=Black

CSG PART NO.	Dimension mm		Q'ty/BAG
	A	B	
A0802HF002AA4T0195	0.80	3.50	2000PCS
A0802HF003AA4T0195	1.60	4.30	2000PCS
A0802HF004AA4T0195	2.40	5.10	2000PCS
A0802HF005AA4T0195	3.20	5.90	2000PCS
A0802HF006AA4T0195	4.00	6.70	2000PCS
A0802HF008AA4T0195	5.60	8.30	2000PCS
A0802HF010AA4T0195	7.20	9.90	2000PCS
A0802HF012AA4T0195	8.80	11.50	1000PCS
A0802HF014AA4T0195	10.40	13.10	1000PCS
A0802HF015AA4T0195	11.20	13.90	1000PCS
A0802HF016AA4T0195	12.00	14.70	1000PCS
A0802HF017AA4T0195	12.80	15.50	1000PCS
A0802HF020AA4T0195	15.20	17.90	1000PCS

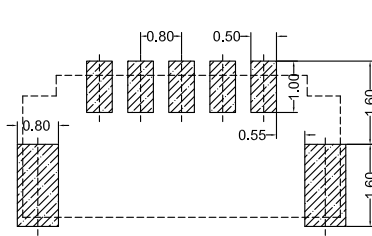
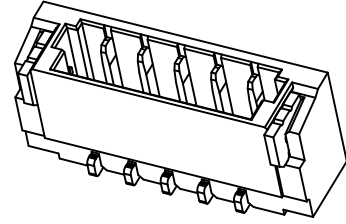
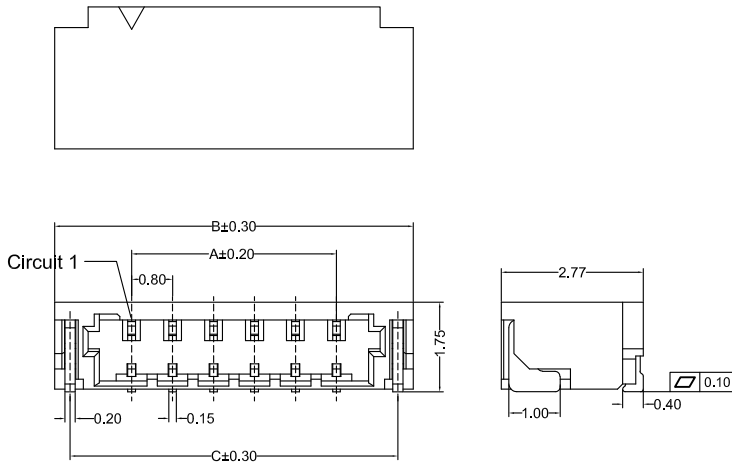


A0802 M 0 A XX 195
 Type
 M=Female Terminal
 Material
 A=Phosphor
 Finish
 TP=Tin-Plated
 GF=Gold-Plated G/F
 Code
 195

CSG PART NO.	Wire Range	Insulation O.D.	Q'ty/Reel
A0802M0ATP195	AWG#28-#32	0.60mm(max)	20000PCS
A0802M0AGF195	AWG#28-#32	0.60mm(max)	20000PCS



A0802 DF52



Recommended P.C.B Layout
General Tolerance±0.05

A0802RS 0XX AA LP TP B 0 195
 PIN
 002=2PINS
 SPECIAL
 AA=NO Special
 Material
 LP=LCP 94V-0
 Finish
 TP=Terminal Tin-Plated
 Code
 195
 Color
 0=Black
 Packing
 B=Tape & Reel

CSG PART NO.	Dimension mm			Q'ty/Reel
	A	B	C	
A0802RS002AALTPB0195	0.80	3.80	3.20	3500PCS
A0802RS003AALTPB0195	1.60	4.60	4.00	3500PCS
A0802RS004AALTPB0195	2.40	5.40	4.80	3500PCS
A0802RS005AALTPB0195	3.20	6.20	5.60	3500PCS
A0802RS006AALTPB0195	4.00	7.00	6.40	3500PCS
A0802RS008AALTPB0195	5.60	8.60	8.00	3500PCS
A0802RS010AALTPB0195	7.20	10.20	9.60	3500PCS
A0802RS012AALTPB0195	8.80	11.80	11.20	3500PCS
A0802RS014AALTPB0195	10.40	13.10	12.80	3500PCS
A0802RS015AALTPB0195	11.20	13.90	13.60	3500PCS
A0802RS016AALTPB0195	12.00	14.70	14.40	3500PCS
A0802RS017AALTPB0195	12.80	15.50	15.20	3500PCS
A0802RS020AALTPB0195	15.20	17.90	17.60	3500PCS